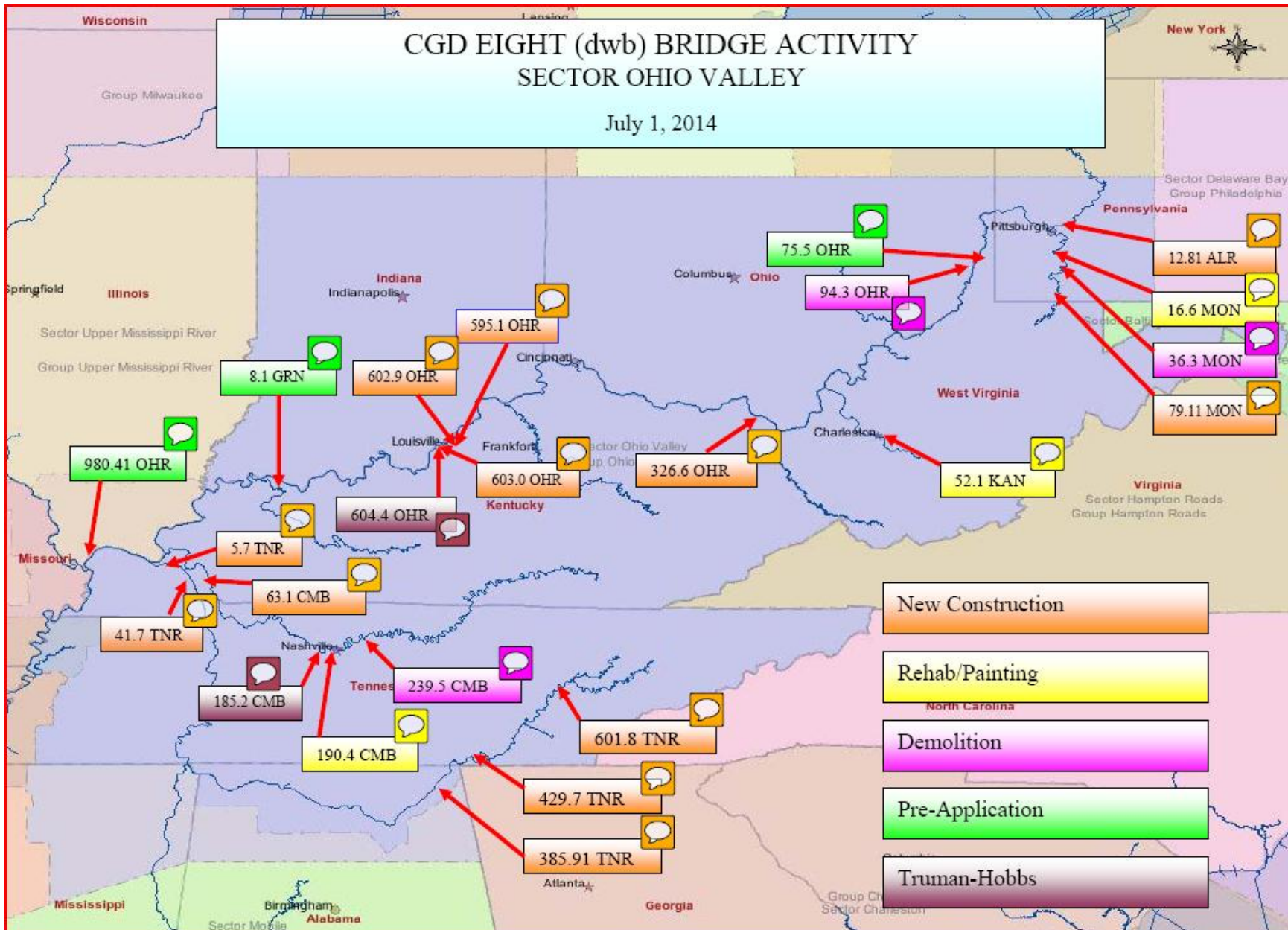




Marine Safety Unit Pittsburgh Waterways Information





Marine Safety Unit Pittsburgh Waterways Information



Monongahela River

MONONGAHELA RIVER

MILE 79.1 - BRIDGE CONSTRUCTION

Masontown Bridge Replacement; Pier construction of both right and left descending channel piers is underway. The channel is clear of floating plant and 344 feet of channel clearance will be maintained during pier construction.

LNM: 46-13

MILE 41.0 - BRIDGE LIGHTING

Charleroi-Monessen Bridge; Due to shoaling approximately 140 feet channel ward from the left descending pier, the red channel margin lights located both upstream and downstream on the left descending side have been moved to mark the edge of this shoaling. Both center green range navigation lights have also been moved approximately 70 feet channel ward to indicate the center of the navigation channel. The horizontal clearance has been reduced to 335 feet.

LNM: 43-13

MILE 16.6 - BRIDGE MAINTENANCE

William D. Mansfield Memorial Bridge; Due to a containment system, the vertical clearance in the channel span has been reduced to 62.3 feet above pool stage. Pier work will also be conducted from a work barge located on the channel ward side of the left descending channel pier. Work barge will be removed nightly. Work will be conducted from 7:00 a.m. until 5:00 pm., Monday through Saturday. Mariners are urged to transit the bridge with caution.

LNM: 10-14



Marine Safety Unit Pittsburgh Waterways Information



Allegheny River

ALLEGHENY RIVER

MILE 45.1 - BRIDGE MAINTENANCE

Kittanning Bridge; Vertical clearance is reduced to 41.6 feet below low steel due to a containment extending below low steel. Work will be conducted on the bridge Monday through Friday, during daylight hours, until April 2015. For additional information, mariners may contact the Kittanning Truss Bridge Crew via VHF-FM Channel 16 or by cell phone at (412) 600-2690.

LNM: 10-14

MILE 12.81 - REPLACEMENT BRIDGE

Oakmont (Hulton) Replacement Bridge; Cofferdam construction has begun for the subject bridge, Monday through Saturday, during daylight hours, until October 22, 2015. A 375-foot navigation channel will be maintained during the construction. Mariners may contact the M/V MAX K via VHF-FM Channel 13 or the work crew at (412) 292-7384, for additional information.

LNM: 01-14

MILE 12.8 - TEMPORARY PRIVATE AIDS TO NAVIGATION

The Pennsylvania Department of Transportation has installed 25 Temporary Unlighted Exclusion Area Buoys, 6 Temporary Unlighted Controlled Area Buoys and 12 Temporary Lateral Buoys to temporarily mark areas to avoid and to aid navigation of the recreational mariner during the construction phases of a new bridge at approximate Mile 12.8 upstream of the Hulton/Oakmont Bridge in Harmar Township and Oakmont Borough, Allegheny County, Pennsylvania. These temporary buoys shall remain on location until completion of the new bridge span. Mariners may directly contact the Pennsylvania Department of Transportation, Mr. James Foringer, PENNDOT District 11-0, 45 Thoms Run Road, Bridgeville, PA 15017 or phone (412) 429-5000. Mariners are advised to exercise caution in this vicinity and to completely avoid navigating outside of the navigable channel in the area.

LNM: 25-14

MILE 4.8 - AID TO NAVIGATION

A can buoy has been reported partially submerged in the vicinity of Mile 4.8. This buoy marks the confluence of the Pine Creek and the Allegheny Rivers. Mariners are urged to exercise caution in the area.

LNM: 30-14



Marine Safety Unit Pittsburgh Waterways Information



USCG Safety Zone/Marine Events:

| Start Date | End Date | Event | Waterway | Time | Closure |
|------------|----------|--|-----------------|-------------|---------|
| 09/13/14 | 09/13/14 | Wheeling Heritage Port Sternwheel Festival | OHR 90.2 - 90.7 | 2045 - 2200 | Full |
| 09/20/14 | 09/20/14 | Pittsburgh Pirates Fireworks | ALLR 0.4-0.6 | 2000 - 2300 | Full |
| 10/04/14 | 10/04/14 | Head of the Ohio | ALLR 0.0-3.3 | 0600 - 1800 | Full |
| 10/20/14 | 10/20/14 | Pittsburgh Steeler/Steelers Fireworks | ALLR 0.4-0.6 | 2000 - 2030 | Full |
| 11/02/14 | 11/02/14 | Pittsburgh Steeler/Steelers Fireworks | ALLR 0.4-0.6 | 2000 - 2030 | Full |

Head of the Ohio is a one day crew regatta which will close the Ohio River down from 0600 AM until 1800 PM at the latest (event anticipated conclusion is earlier).

1st race start time is 730 AM.

Last race start time is 335 PM with river opening shortly after.

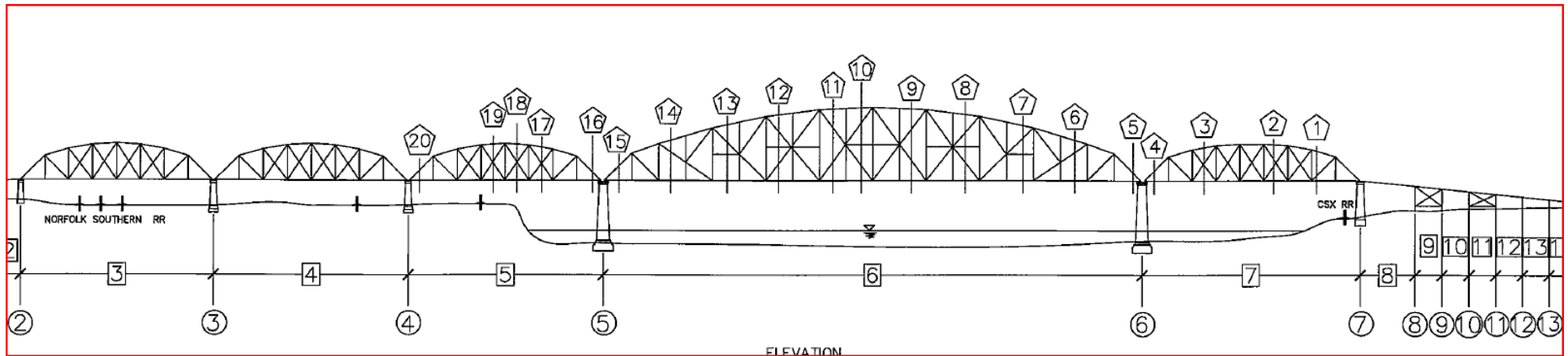


Marine Safety Unit Pittsburgh Waterways Information



Demolition Plan for the Donora Webster Bridge in Washington PA

An estimated safety zone will be a minimum of 1000 feet. The bridge is at mile 36.3 on the Monongahela River. Demolition date is not set and could occur as early as October 2014 or as late as July 2015.

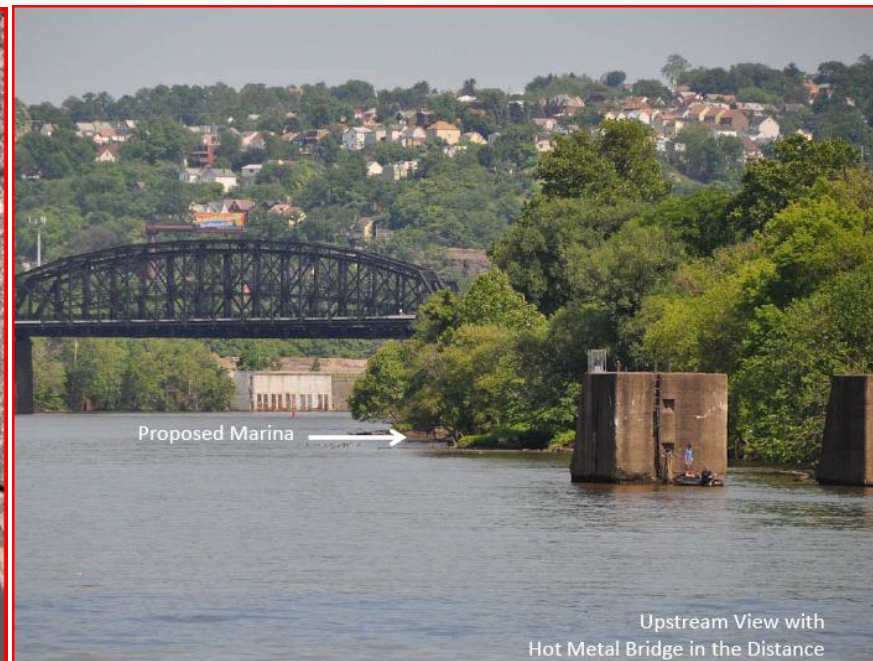
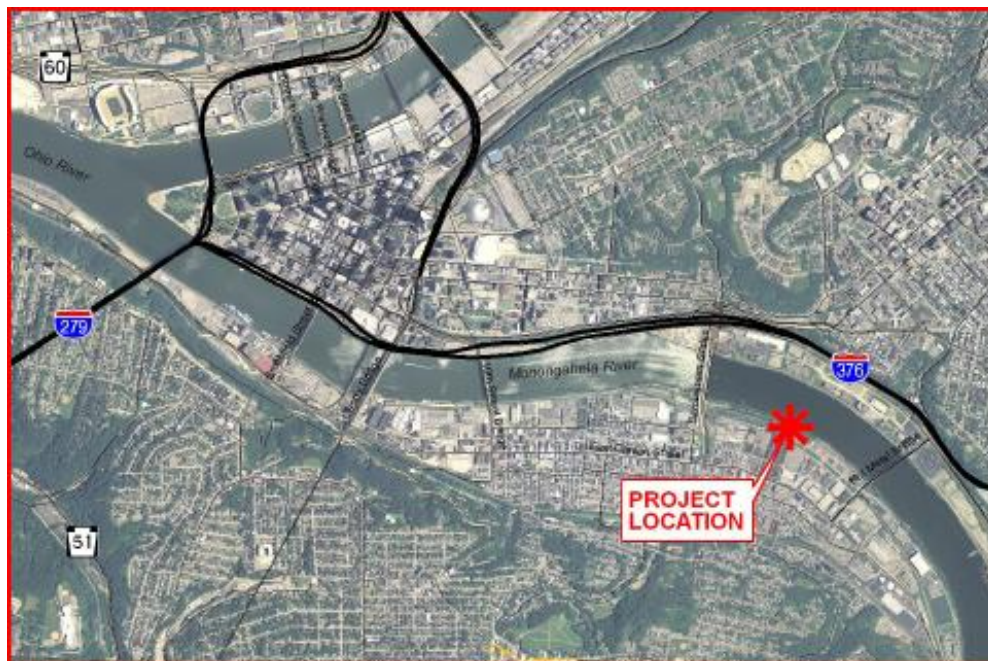




Marine Safety Unit Pittsburgh Waterways Information

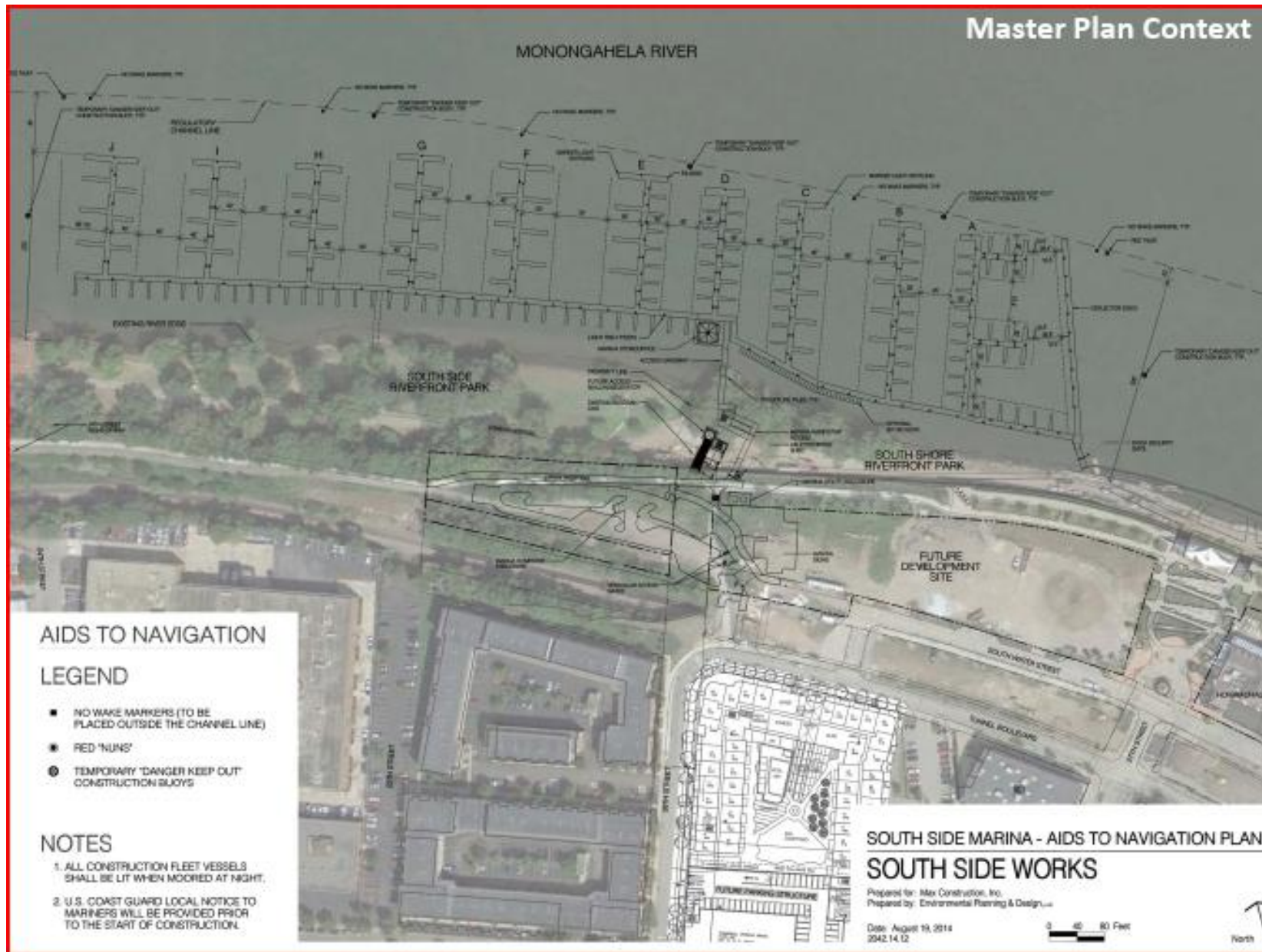


ACOE Public Notice 14-37 for South Side Marina on the left bank of the Monongahela River at mile 2.6 – 2.75





Marine Safety Unit Pittsburgh Waterways Information





Marine Safety Unit Pittsburgh Waterways Information



-Bridging Gaps in Our Marine Community-

September 9-11, 2014 – 3 MSU members are attending this week’s Western Rivers Orientation in Louisville, KY to learn brown water community practices. In attendance are our Executive Officer, LCDR Patrick Burkett, Chief Jason Spence and MST1 Joshua Campbell.

September 17, 2014 - AMSTEP Exercise (active shooter) will be held at the Beaver County Emergency Operations Center. 351 14th Street, Ambridge, PA 15003. The exercise will be held from 9:00AM – 2:00PM with registration beginning at 8:30AM. RSVP to Dave Morgan at David.J.Morgan@uscg.mil and participate in the exercise to obtain required exercise credit.

September 24, 2014 - SWAT Uninspected towing vessel familiarization training, Elizabeth, PA

September 24, 2014 - DHS Career Seminar at Penn State University Beaver Campus, 11 am – 2 pm at 100 University Drive, Monaca PA 15061. This is not a recruiting event, but an educational opportunity and brand promotion.

October 8, 2014 – Joint Marine Incident Summit with MSU Huntington. This is to be scheduled for the morning of the joint Waterways Association meeting. All are welcome to attend in this no attribute discussion of recent Marine Casualty Investigations.

October 14, 2014 - Who works the Rivers, for high school students to meet representatives from a full range of river industries. Event will take place on board the Gateway Clipper Fleet 0930-1130.

October 21, 2014 - DHS will host a “Loss of Pool” Exercise at the Region 13 Emergency Operations Center. 400 North Lexington Street (2nd Floor) Pittsburgh, PA 15208. RSVP to Dave Morgan at David.J.Morgan@uscg.mil and participate in the exercise to obtain required exercise credit.



Marine Safety Unit Pittsburgh Waterways Information



December 8, 2014 - MSU Pittsburgh unit relocation to Bridgeville, PA

-Mariner FYI-

TWICs – TWICs with improperly sized pictures known to TSA clearly identify the cardholder, however the sizes do not properly align with TWIC card standards. The pictures are approximately 80-90% of the required size, but do not appear pixilated or distorted in any way. A red design typically hidden by a properly sized picture is visible on these TWICs and appears to frame the transportation workers picture. All other security features of these TWICs are properly displayed and functional.

UTV Program - MSU Pittsburgh currently has 64/183 (39%) of Uninspected towing vessels with decals expiring in calendar year 2014. 20/64 (31%) of industry initiated renewals have been conducted. So far, most deficiencies involve fire-fighting equipment (fire extinguishers and portable fire pumps which should be specifically designated for the vessel). Please be vigilant for the safety of your crews and be prepared when requesting USCG re-inspections by calling our office in advance if you need a refresher and help our inspectors ensure decals are delivered with first site visit!

Guidance to Vessels/Let's Exercise our Plans – Urge all companies to utilize the two current scenarios related to the Ebola Virus threatening foreign ports and the human enterovirus 68 which has attacked hundreds of children's respiratory systems throughout the Midwest, as a time to exercise your Vessel Security Plan, with respect to security isolation and quarantine. The more prepared you are the better for the safety of our region and the nation.