

RIVER AND WEATHER CONDITIONS

Prepared for Waterways Association Meeting 2/13/2013
National Weather Service Forecast Office, Pittsburgh PA
For the latest river and weather forecasts--<http://www.weather.gov/pittsburgh>

WEATHER RECAP

January temperatures averaged above normal but there were wild swings in temperatures more typical of early Spring than mid-winter. Precipitation was near normal. The warm ups and resulting short term melts have been beneficial in preventing an excessive build-up of the snow pack in the mountains.

At the Pittsburgh International Airport, monthly precipitation was 2.44 inches, which was 0.26 inches below normal. On January 30th, the Pittsburgh Airport broke the record maximum high temperature for the day with 68 degrees, breaking the old record of 66 degrees set in 1910. In January, temperatures averaged 3.1 degrees/day above normal with an average monthly temperature of 31.5 degrees.

RIVER CONDITIONS RECAP

Significant rises on District Rivers began on January 29th and continued through the end of the month with many points along the Monongahela, Cheat, Lower Allegheny, Upper Ohio and Tuscarawas rivers reaching alert stages. Flows increased and temperatures warmed up enough that nearly all the ice on the Allegheny was flushed out.

Some crests :

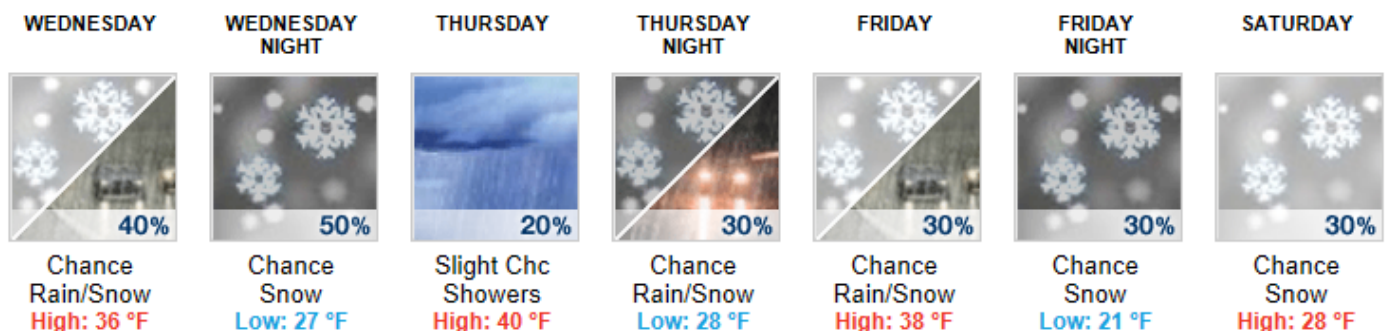
Parsons	01/31	12.83ft	Gray's Landing	01/31	19.46ft
Natrona L&D	01/31	15.92ft	Pittsburgh	02/01	22.15ft

HIGH WATER POTENTIAL

For this time of the year, flows on the Allegheny are 125% of normal, the Monongahela 100%, and the Ohio 120%. A minimum of 1.50 inches basin wide rainfall in 6 to 12 hours is needed to bring rivers to bank full. High water potential is above normal. Current Snow cover in the mountains areas and associated snow water equivalent are actually below normal for mid-February.

The outlook for precipitation through the end of February suggests precipitation will be falling as more snow than rain. The storm track will be active, with several clipper systems that will bring snow events...then a couple of southern systems that could bring the potential for rain events. Total 2 week liquid equivalent precipitation is projected to be close to 2.00 inches.

WEATHER FORECAST



8-14 Day Outlook... Normal temperatures and above normal precipitation.

30 Day Outlook... Normal temperatures and above normal precipitation.

Feb-Mar-Apr Outlook... Above normal temperatures and normal precipitation

Apr-May-Jun Outlook... Above normal temperatures and normal precipitation

Jun-Jul-Aug Outlook... Above normal temperatures and near normal precipitation

Average Yearly snowfall Pittsburgh: 41.9 inches **So far in 2012-2013:** 32.2 inches

2011-12: 37 inches

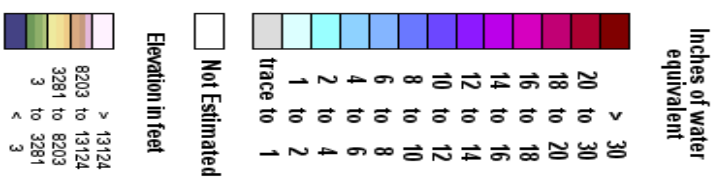
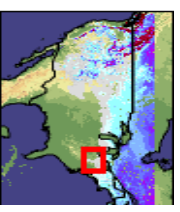
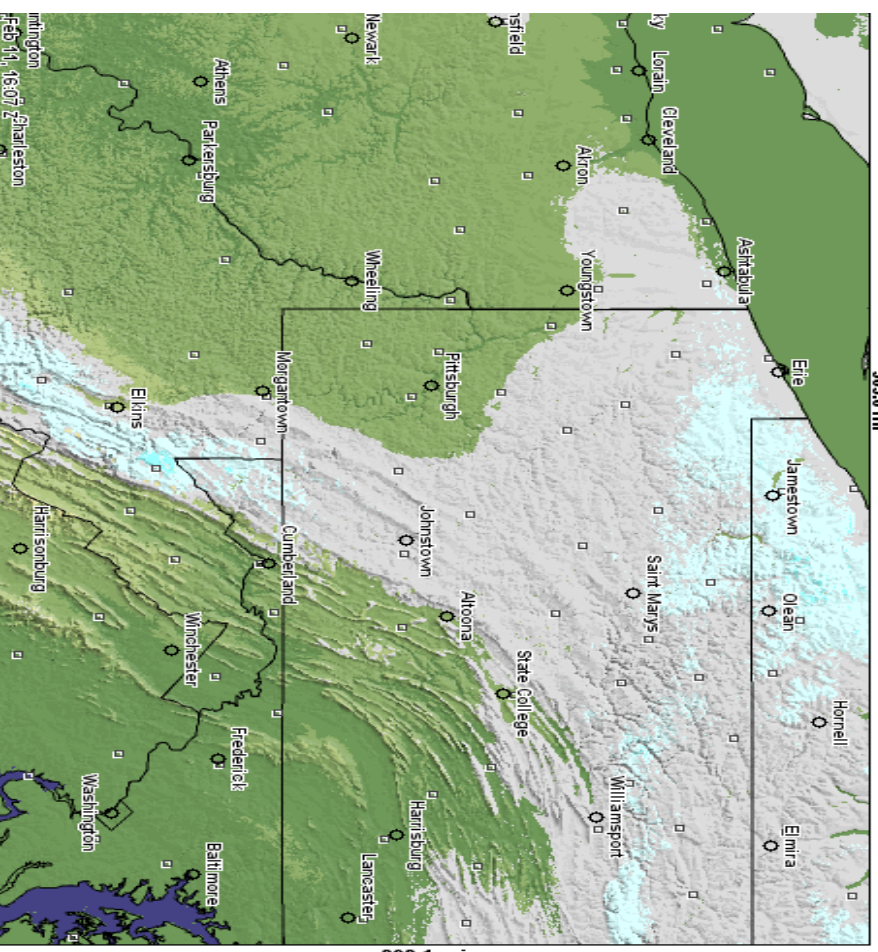
2010-11: 57 inches

2009-2010: 77 inches

The frequent thaws have been beneficial in preventing an excessive build-up of the snow pack in the mountains. Snow water equivalent values in the mountains of the Cheat basin have only limited areas of 1 to 2 inches.

COE Flood Storage Used

Modeled Snow Water Equivalent forecasted for 2013 February 12, 12:00 Z



RESERVOIR	FLOOD STORAGE CAPACITY USED
Allegheny	0%
Tionesta	0%
Union City	12%
Woodcock	0%
East Branch	0%
Mahoning	1%
Crooked Cr.	2%
Conemaugh	4%
Loyalhanna	1%
Stonewall	3%
Tygart	11%
Yough	0%
Kirwan	5%
Berlin	7%
Milton	0%
Mosquito	3%
Shenango	1%