

# RIVER AND WEATHER CONDITIONS

Prepared for Waterways Association Meeting 12/14/2016

National Weather Service Forecast Office, Pittsburgh PA

For the latest river and weather forecasts--<http://www.weather.gov/pittsburgh>

## WEATHER RECAP

November 2016 was much warmer than normal. Rainfall was well below normal. It was the warmest fall in 70 years. The average temperature was 57.5 degrees from September through November. This was the warmest fall since 1946 and the 7th warmest fall since 1881.

## OUTLOOK

**Week of Dec 12:** The coldest air since last February by late week but then rapid moderation by weekend. 1.0 Inch precipitation.

**Outlook for week of Dec 19:** A stormy period with frequent storm systems bringing some rain then cold blasts with snow and Lake effect snow. Precipitation around 2.0 inches.

**Outlook for week of Dec 26:** Continued colder than normal and stormy. Still appears storms will bring both rain followed by snow.

**Outlook January:** Cold blasts continue, but still large swings in temperatures.

**Outlook February:** Above normal snow fall and below normal temperatures.

**Outlook for Spring:** A wet spring. Perhaps one of the top 25 wettest springs.

## HIGH WATER POTENTIAL








High water potential is normal to slightly above normal. Uncertainty over the next several weeks of how much rain versus snow we will get. A minimum of 1.75 inch basin wide rainfall in 6 to 12 hours is needed to bring rivers to bank full. Total precipitation through the first week of January should average about 3-4 inches which is above normal.

Location	Nov 2016 Precipitation	Departure (Inches)	Nov Snowfall	Seasonal Snowfall
Pittsburgh	1.43	-1.80	2.1 (+0.1)	4.1(-2.0)

Location	Nov Average Temperature	Departure Degrees	Extreme High	Extreme Low
Pittsburgh	46.5	+3.6	80 Nov 2	23 Nov 22,23

	Jan	Feb	Mar	Apr	May	Jun	Jul	Aug	Sep	Oct	Nov	Dec	Annual
Average monthly precipitation	2.7	2.39	2.95	3.11	3.95	4.3	3.83	3.48	3.11	2.29	3.23	2.85	38.19
Average High Temperature	35.7	39.3	49.2	61.7	70.8	79.1	82.5	81.4	74.3	62.6	51.2	39.4	60.7
Average Low Temperature	21.1	23	30	40.2	49.3	58.4	62.8	61.5	54	42.9	34.7	25.3	42
Average monthly snowfall	11.8	10.3	7.6	1.5	0	0	0	0	0	0.4	2	8.3	41.9

## WEATHER FORECAST

Wednesday	Wednesday Night	Thursday	Thursday Night	Friday	Friday Night	Saturday
						
Partly Sunny	Slight Chance Snow Showers 20%	Slight Chance Snow Showers then Partly Sunny 20%	Partly Cloudy	Partly Sunny	Snow 80%	Wintry Mix then Rain 80%
High: 26 °F	Low: 10 °F	High: 14 °F	Low: 5 °F	High: 22 °F	Low: 20 °F	High: 45 °F

**8-14 Day Outlook...** Stormy with cold blasts. Rain followed by snow each storm system .

**30 Day Outlook...** Frequent storm systems with large swings in temperatures and above normal precipitation.

**Feb-Mar-Apr Outlook...** Precipitation perhaps one of the top 25 wettest for total precipitation. Above normal snowfall.

**Apr-May-Jun Outlook...** Spring expected to be slow to start. Colder than normal with above normal precipitation.

**Jun-Jul-Aug Outlook...** Normal temperatures and normal precipitation

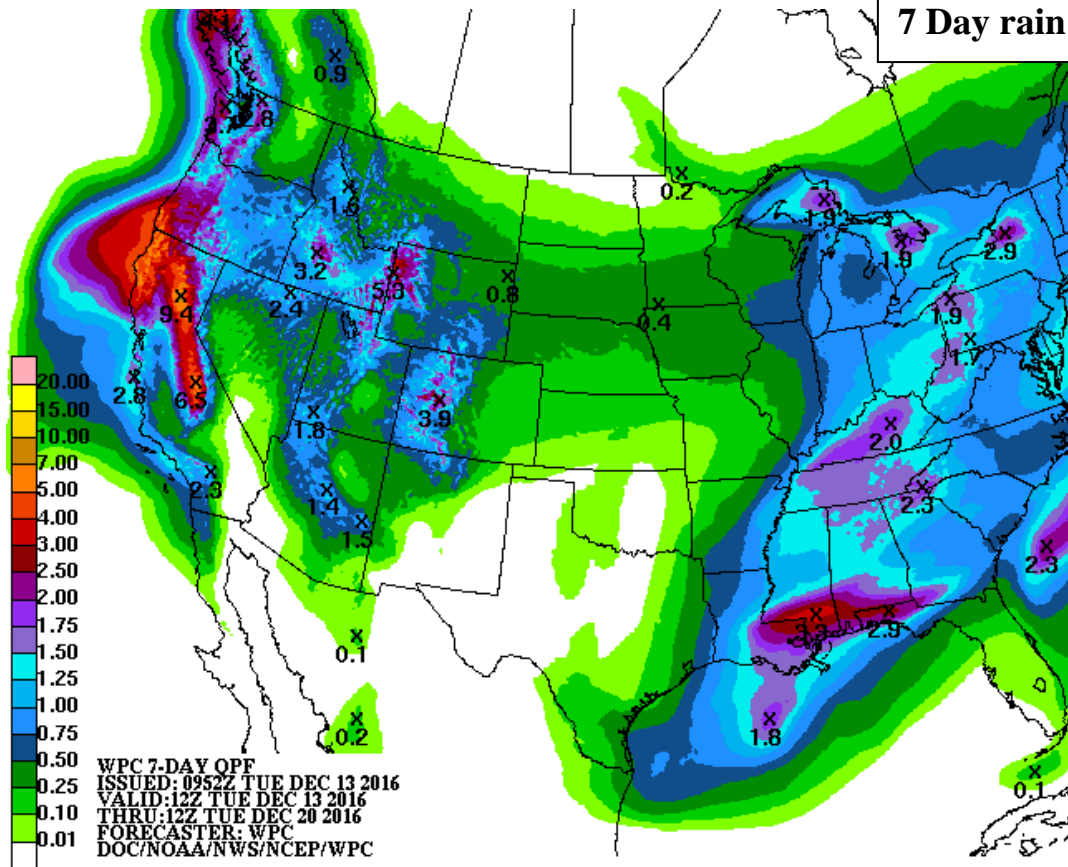
**Average Yearly rainfall Pittsburgh:** 38.19 inches **So far in 2016:** 32.07(-2.54)

Totals for: 2015:40.56 2014: 36.84 2013: 36.65 inches; 2012: 41.74 inches; 2011: 44.24 inches; 2010: 37.85 inches

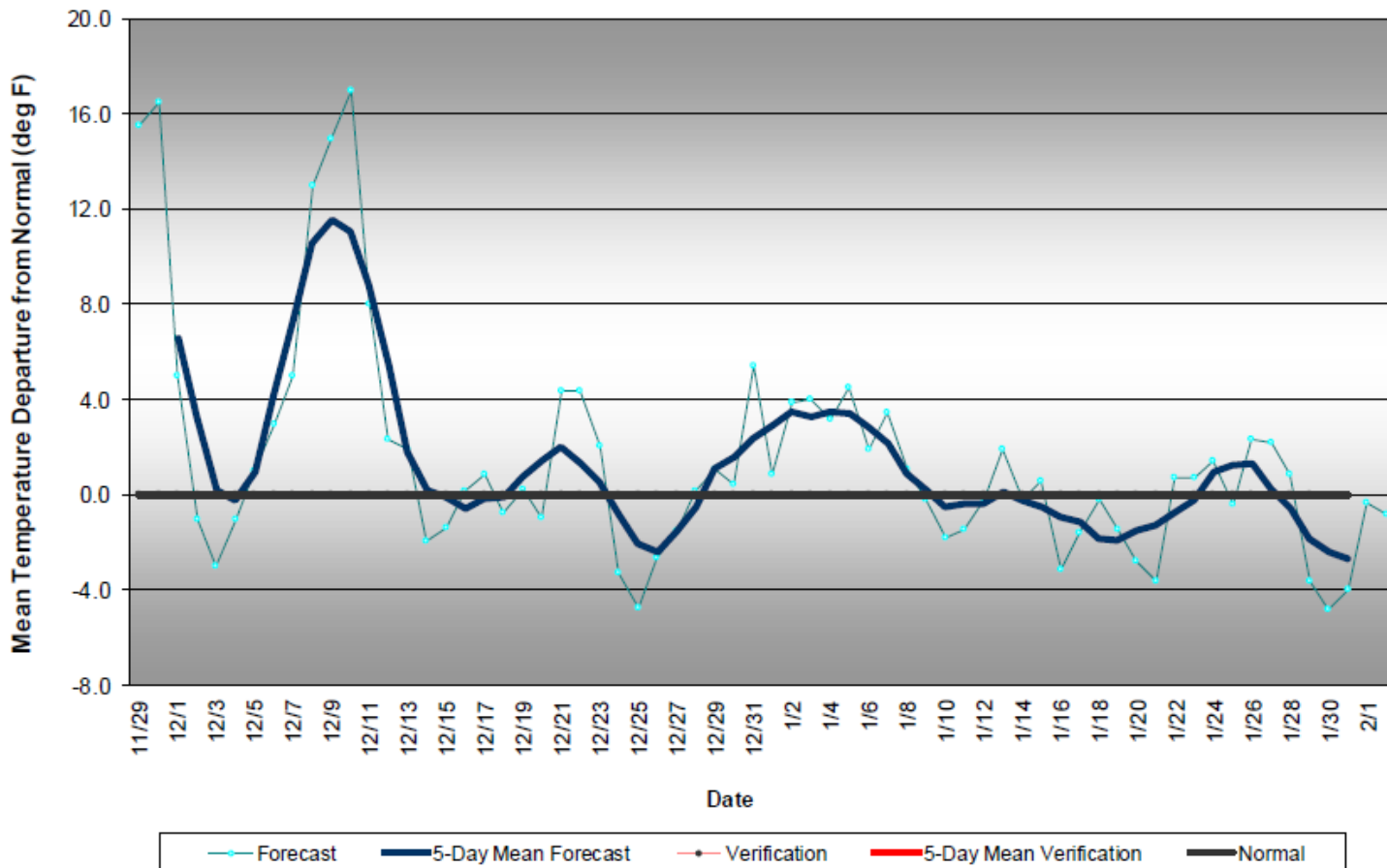
**Average Yearly snowfall Pittsburgh: 41.9 inches** 2015-16 season: 29.6 inches (-12.3) **So far 2016-17:** 4.1(-2.0)

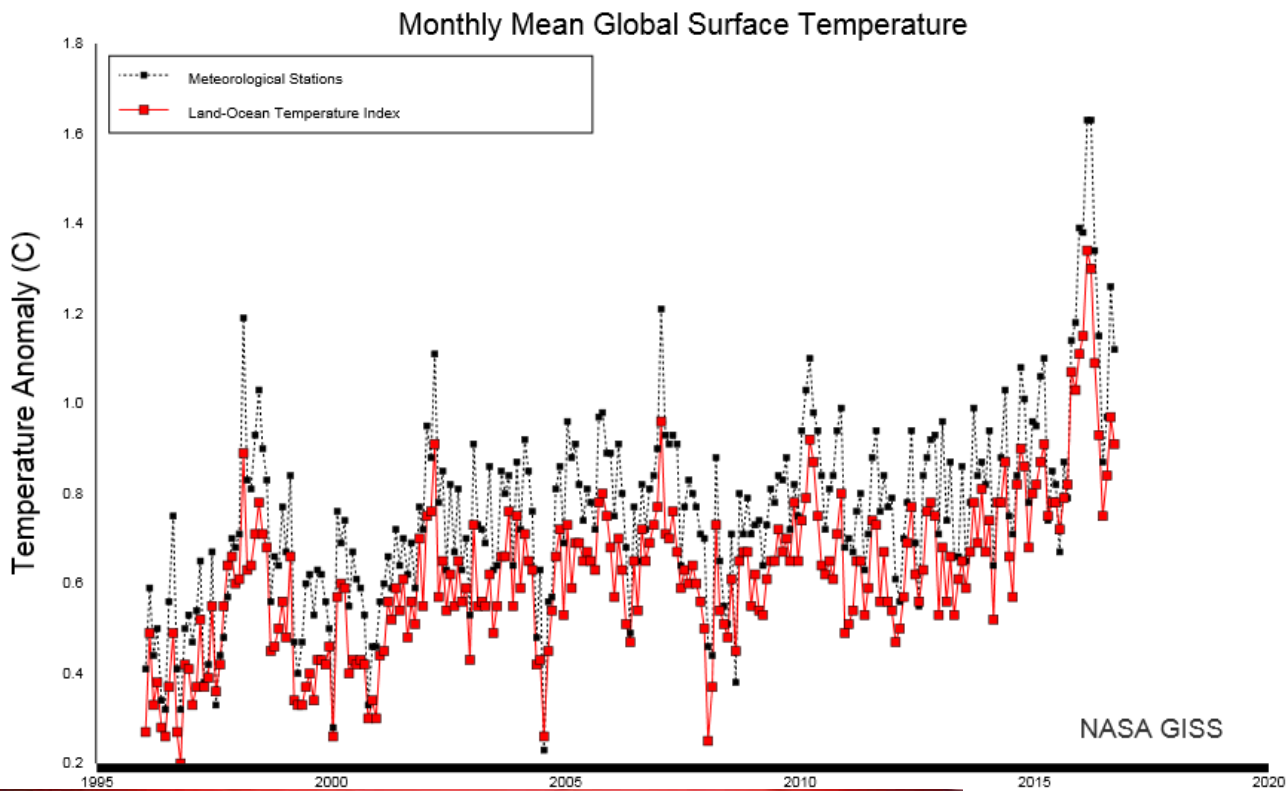
2014-15: 47.2 in 2013-14: 63.4 in; 2012-13: 57 in; 2011-12: 37 in; 2010-11: 57 in; 2009-10: 77 in

# 7 Day rain forecast



## Western Pennsylvania Temperature Forecast December 2016 - January 2017





**FEB-APR PENNSYLVANIA PRECIPITATION**  
**AFTER YEARS WITH A BIG GLOBAL TEMPERATURE DROP**

1. 1993	12th Wettest *	9. 1991	44th Driest
2. 1994	4th Driest	10. 1985	65th Driest
3. 1974	50th Wettest	11. 1999	32nd Wettest
4. 2001	54th Driest	12. 1908	5th Wettest *
5. 1960	9th Wettest *	13. 1907	6th Wettest *
6. 1951	16th Wettest	14. 1954	33rd Wettest
7. 1989	21st Driest	15. 1982	11th Wettest *
8. 1976	28th Wettest		

During years when we have a rapid drop of several degrees in global temperatures (typically after a strong El Nino has ended)

**Statistically bring Pennsylvania:**

A much wetter than normal spring. Normal Feb-Apr precipitation is about 8 inches.

Starting November 15, the evening forecast text product will be issued on an as needed basis when changes to the forecast are expected.

The AHPS stage forecast graphics will be updated each evening as they always have been.

**EXAMPLE: Only updated as needed in evenings**

HYDROLOGIC STATEMENT  
NATIONAL WEATHER SERVICE PITTSBURGH PA  
831 PM EST MON NOV 7 2016

Daily River Forecast

Past 24 hour precipitation...  
There was none.

Forecast precipitation for the next 48 hours...  
Basin average rainfall is forecast to range from 0.25 to 0.50 inches.

River trends...  
We expect little change.

**EXAMPLE: Will always be updated:**

